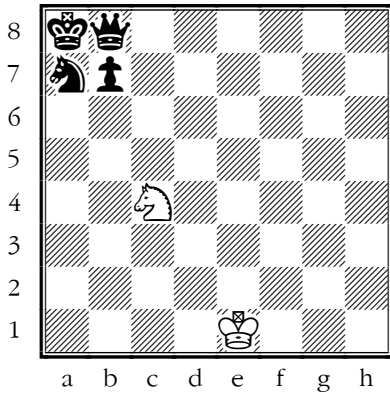
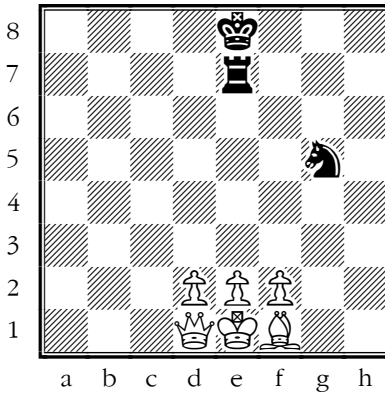


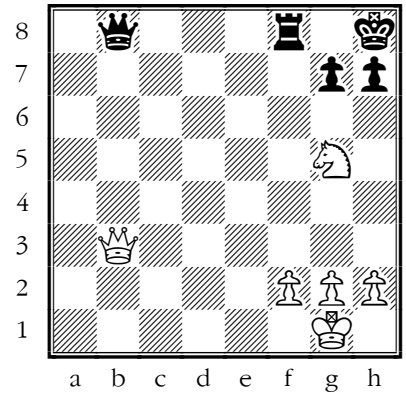
Drill on smothered mates.



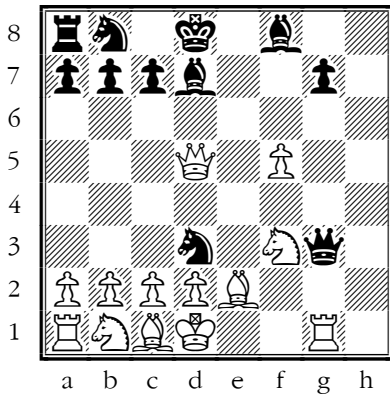
#1 White to move
White mates in 1 move (Y/N)



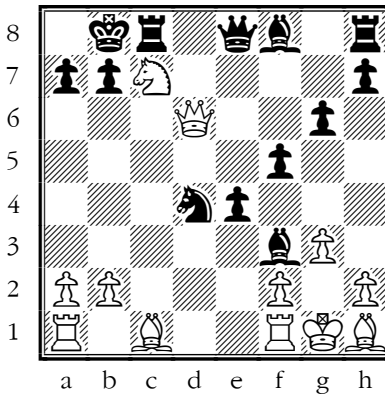
#2 Black to move.
Black mates in 1 move (Y/N)



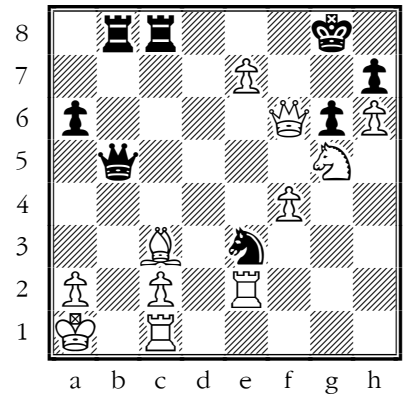
#3 White to move.
(A) 1. ♖g8+ (B) 1. ♖xb8 (C) 1. ♘f7+



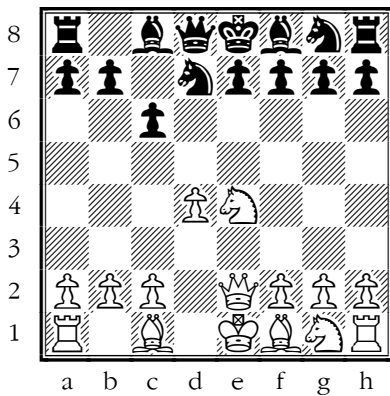
#4. Black moves.
(A) 1... ♖e1+ (B) 1... ♘f2+



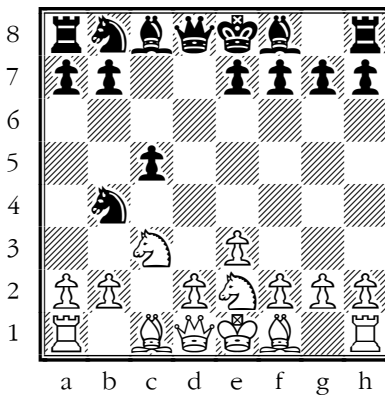
#5. White moves.
(A) 1. ♘xe8+ (B) 1. ♘a6+ (C) 1. ♖xd4



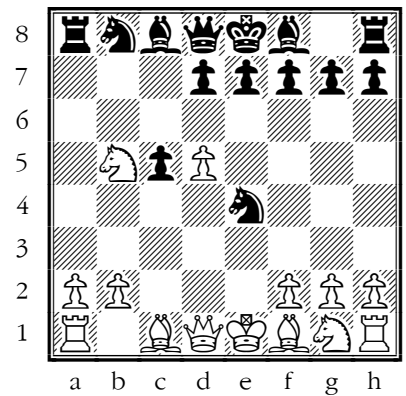
#6. Black moves.
(A) 1... ♖b1+ (B) 1... ♖xe2 (C) 1... ♘xc2+



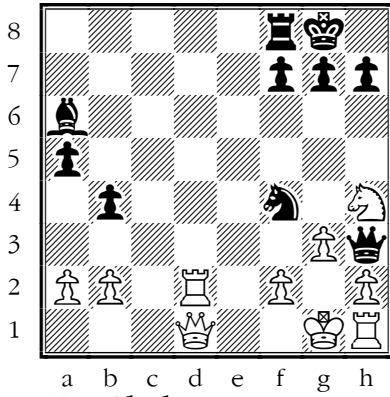
#7. Black moves.
(A) 1... e6 (B) 1... ♘gf6 (C) 1... g6



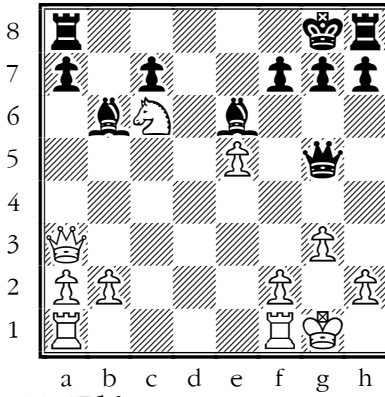
#8. White moves.
(A) 6. d3 (B) 6. g3 (C) 6. ♘g3



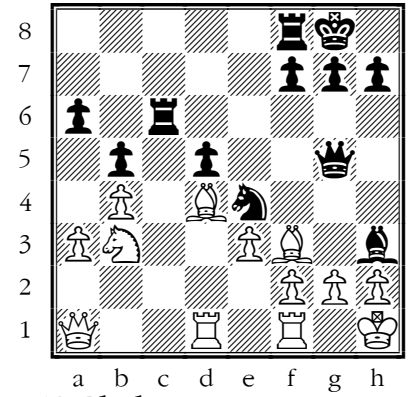
#9. White moves.
(A) 8. d6 (B) 8. ♘f4 (C) 8. ♖e2



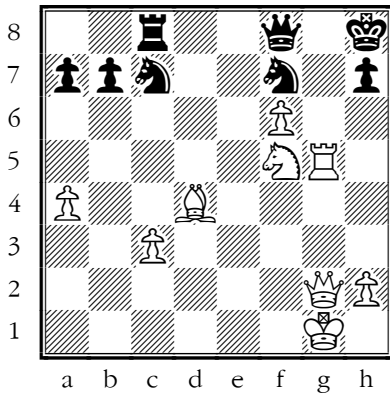
#10. Black to move.
Can Black mate in 2 moves. (Y/N)



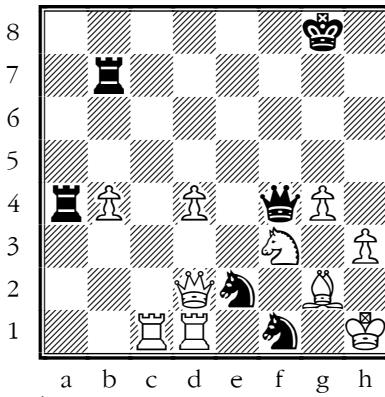
#11. White to move.
(A) 1.♖e7+ (B) 1.h4



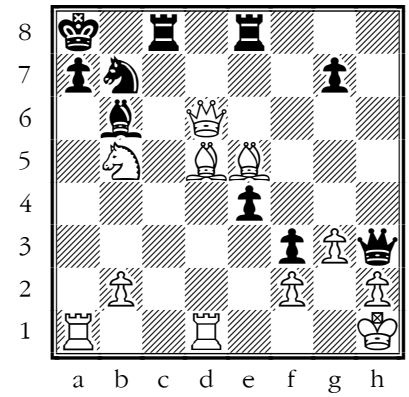
#12. Black to move.
(A) 1...♖g6 (B) 1...♗xf2+ (C) 1...♕xg2+



#13. White to move.
Is 1.♖g8+ correct? (Y/N)

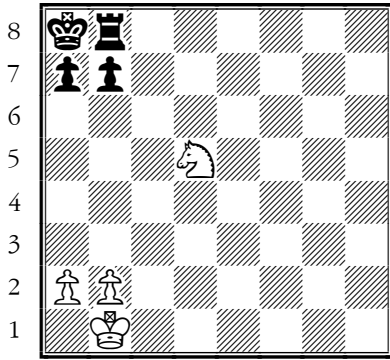


#14. Black to move.
(A) 1...♗fg3+ (B) 1...♗eg3+
(C) 1...♗xd2 (D) 1...♗h2+

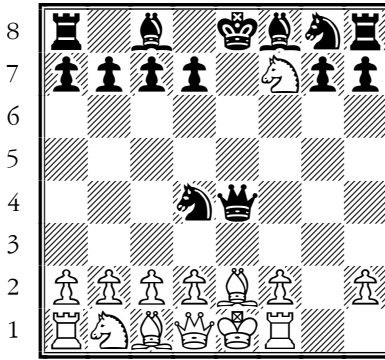


#15. White to move.
(A) 1.♖g1 (B) 1.♗b8+ (C) 1.♗xb6
(D) 1.♖xa7+ (E) 1.♕xb7+

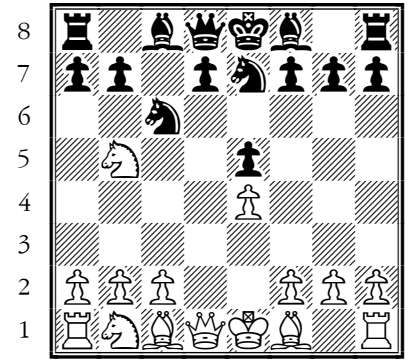
Exercises on smothered mates.



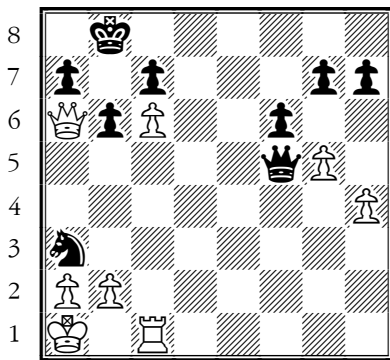
a b c d e f g h
#1 White mates in 1 move.



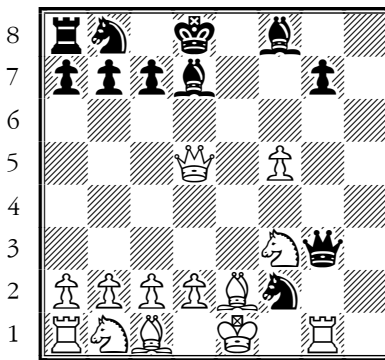
a b c d e f g h
#2 Black mates in 1 move.



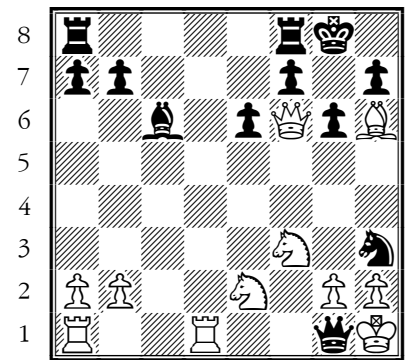
a b c d e f g h
#3 White mates in 1 move.



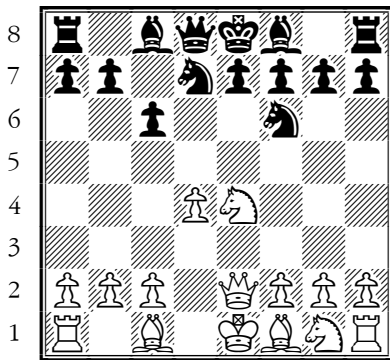
a b c d e f g h
#4 Black mates in 2 moves.



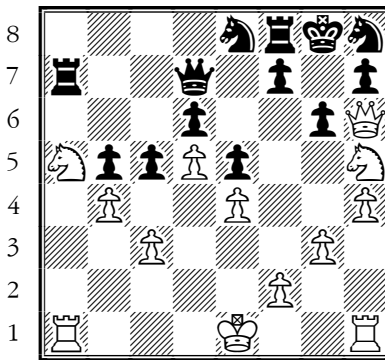
a b c d e f g h
#5 Black mates in 3 moves



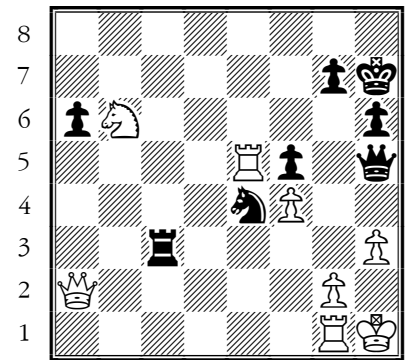
a b c d e f g h
#6 White wins.



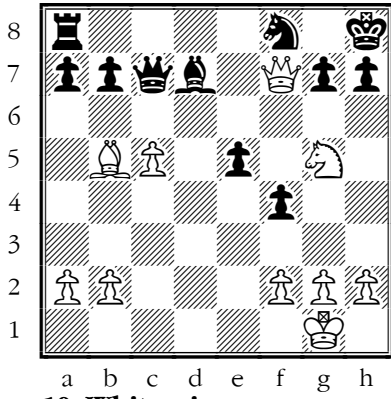
a b c d e f g h
#7. White mates in 1 move.



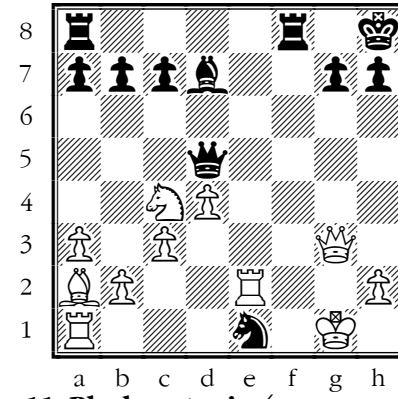
a b c d e f g h
#8 White mates in 2 moves.



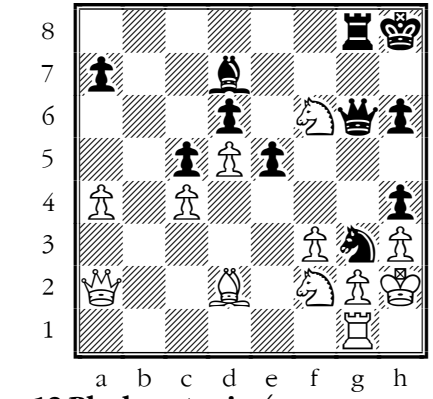
a b c d e f g h
#9 Black mates in 3 moves.



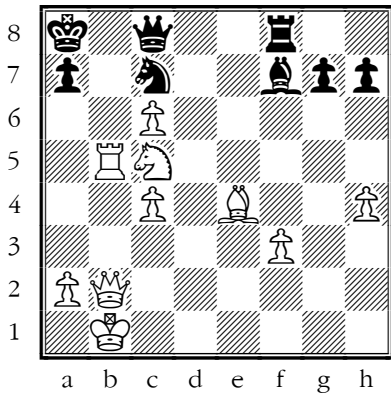
#10 White wins.



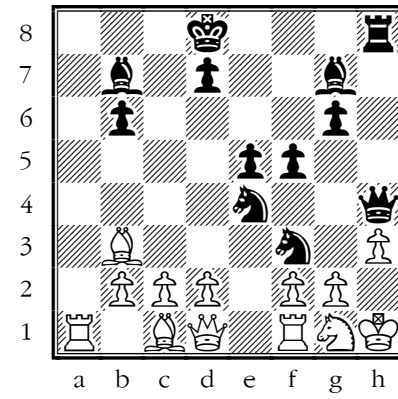
#11 Black mates in 4 moves.



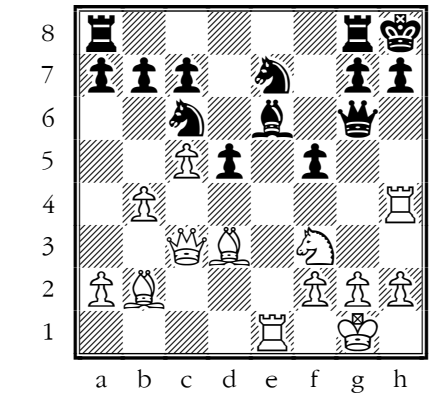
#12 Black mates in 4 moves.



#13 White mates in 4 moves.



#14 Black wins.



#15 White wins.